

# Notes to Installer:

This pump pulls water in by suction. The inlet plumbing must offer a very free flow, like a drain pipe in reverse. The pump will be very noisy if intake is restricted or blocked by air pockets or being undersized. See Page 3

**NOISE = CAVITATION = RAPID PUMP WEAR**  
**FIX THE PROBLEM!!!** See Page 14

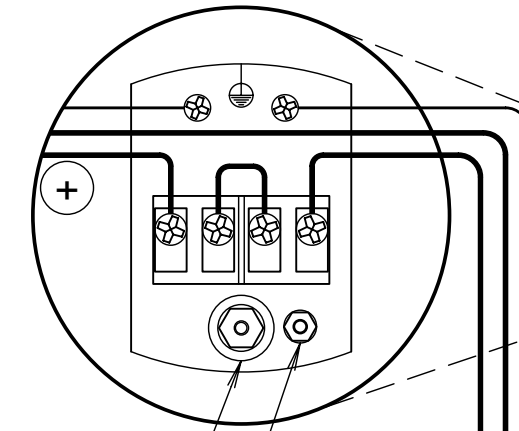
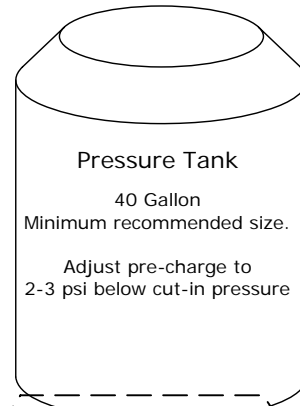
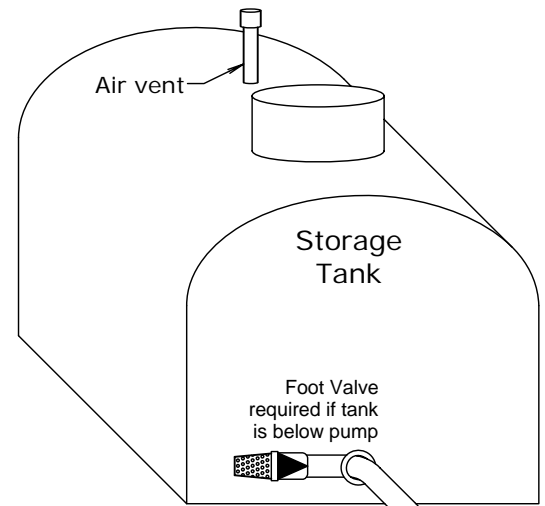
This pump tolerates NO solid debris.  
 A disposable cartridge filter is required at the intake.  
 NEVER run this pump without a filter. See Page 2

Do not omit the intake screen.  
 After the first test run, check the screen  
 and remove any plumbing debris. See Page 6

Low voltage systems require larger wire than 115v.  
 See Conergy Universal Wire Sizing Chart for assistance.

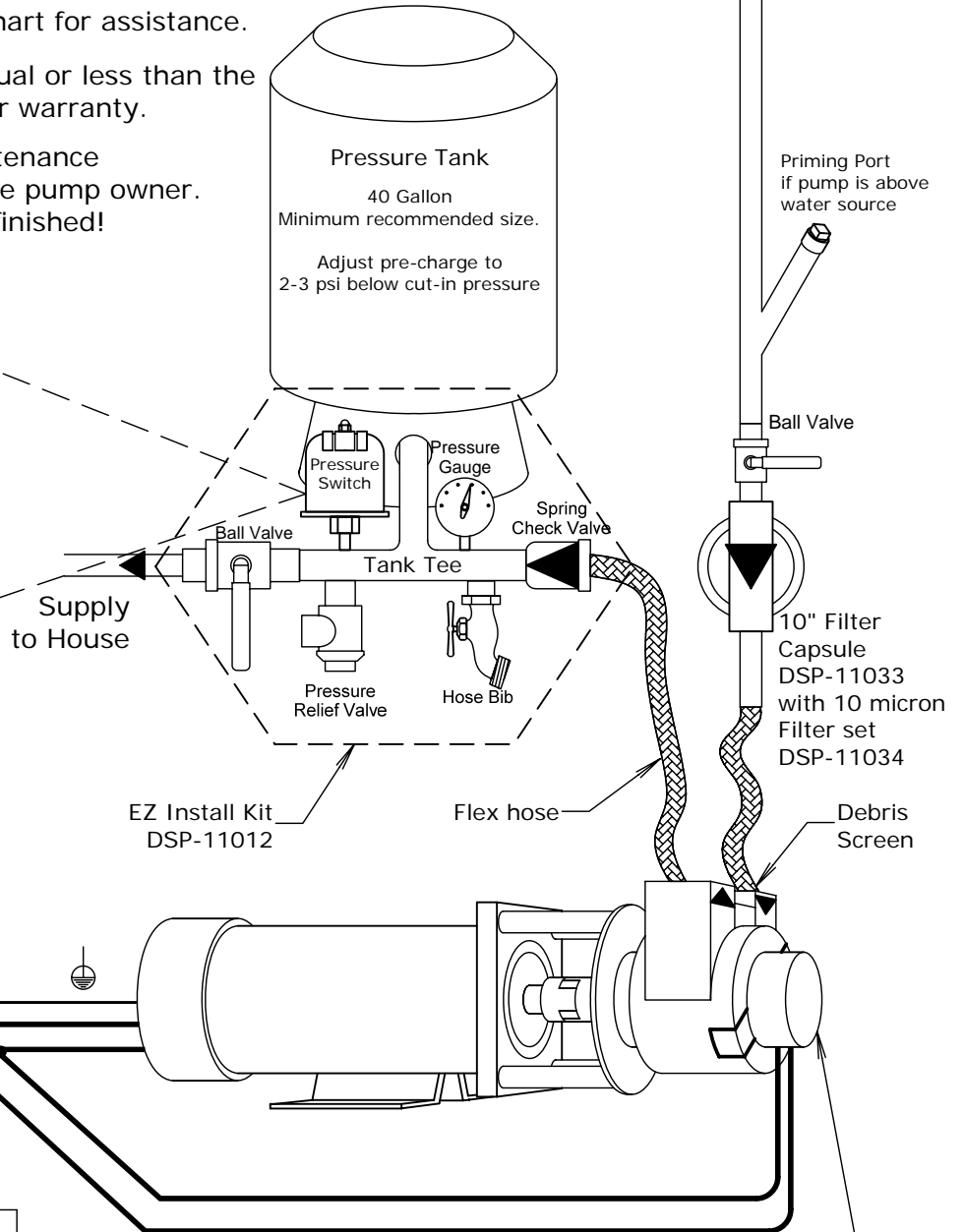
Failure to install a fuse or breaker equal or less than the motor's Max Amp rating will void your warranty.

The manual contains important maintenance information, and is the property of the pump owner.  
 Please give it to them when you are finished!



Turn CW to raise CUT ON & OFF pressure  
 Turn CW to raise OFF pressure

A **STEADY BUZZING SOUND** indicates EXCESSIVE SUCTION.  
 An **UNSTEADY BUZZING SOUND** indicates a LEAK IN THE SUCTION LINE.  
 See Page 14 for troubleshooting tips



**FlowLight  
 Booster Pump  
 EZ Install Diagram**  
 www.conergy.us

5/2005

R 2.0

© Copyright Conergy 2005

Optional Dry Run Protection  
 DSP-02527 for Booster Pumps