

2010 Products and Accessories Catalog



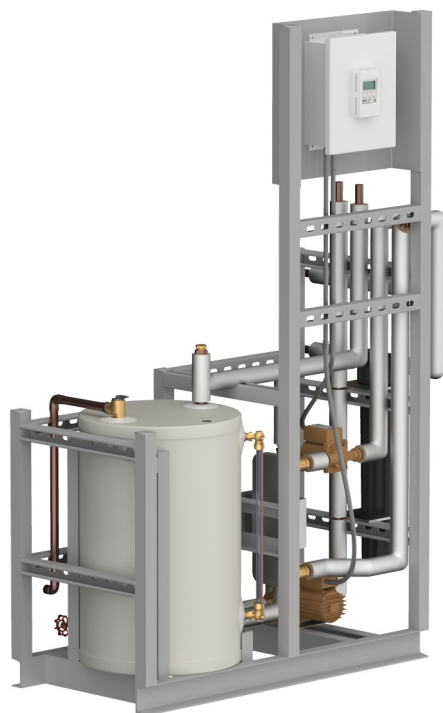
PROPAC™ 10D Domestic Integrated Drainback System:

- Fully integrated, self contained heat transfer unit
- 160 ft² maximum collector surface area
- 320 gallons maximum storage tank capacity
- Freeze proofs collectors
- No remote valves
- No collector scaling
- TIG welded 304 stainless 10 gallon reservoir
- Serviceable Stainless Steel heat exchanger
- Quiet operation
- Pre-tested, Factory certified
- Compact design
- Over temperature protected
- Dual bronze pumps

Part Number
IDS 10 160 PP 120 - 10 gallon Integrated Drainback System

Accessories:
Flow Meter - 6" inline flow meter 3/4" MIP
Temperature Gauges - in line dial temperature gauges 100°F to 250°F range
WH Conversion Kit - Water heater element conversion kit

See spec sheets for more information



PROPAC™ Commercial Integrated Drainback System:

- Fully integrated, self contained heat transfer unit
- Up to 800 ft² maximum collector surface area
- Freeze proofs collectors
- No remote valves
- No collector scaling
- TIG welded 304 stainless reservoir
- Serviceable Stainless Steel heat exchanger
- Pre-tested, Factory certified
- 3/4" to 1 1/4" piping available
- Over temperature protected
- Custom size systems available

Part Numbers
IDS 20 320 PP 240 - 20 gallon, 320 ft² collector max., Integrated Drainback System
IDS 30 600 PP 240 - 30 gallon, 600 ft² collector max., Integrated Drainback System
IDS 40 800 PP 240 - 40 gallon, 800 ft² collector max., Integrated Drainback System

See spec sheets for more information



(Propac T-10 shown without insulation)

Propac[®] T System Tanks:

- 100% 304 Stainless Steel construction with rigid foam insulation
- Converts any water heater to a Solar water heater (with DBX SS kit)
- Attractive and lightweight
- Insulated Stainless Steel brazed heat exchanger
- 5 Year warranty
- Convenient filling access with location for pressure relief valve
- Engineered for placement on top of water heater
- All tanks come with a sight glass
- Available in 10, 15 and 20 gallon sizes

Part Numbers

PP T 1010 - 10 gal. Drainback Tank with 10-plate Stainless Steel heat exchanger

PP T 1510 - 15 gal. Drainback Tank with 10-plate Stainless Steel heat exchanger

PP T 1220 - 20 gal. Drainback Tank with 12-plate Stainless Steel heat exchanger



Propac[®] T System Kit:

- Kit includes all major hardware for a Propac[®] T tank:
- TACO 009 bronze circulator pump
- TACO 003 bronze circulator pump
- TACO Bronze pump flange set for 009 pump
- Steca TR301 U solar controller with sensors
- 6"Welded aluminum tank stand with vinyl feet
- Brass boiler drain
- 50 psi pressure relief valve
- High quality patch cord for pumps

Part Numbers

PP T KIT - System kit for Propac T tanks
(additional fittings and piping required)

(Propac T-1010 shown with System Kit installed)



Drainback Tanks:

- 100% 304 Stainless Steel construction with rigid foam insulation
- SRCC certified
- Dent resistant ABS plastic jacket
- Attractive and lightweight
- 5 Year warranty
- Convenient filling access with location for pressure relief valve
- Return line dip tube for quiet operation
- 7, 10, & 15, gal. Engineered for placement on top of water heater
- All tanks come with a sight glass

Part Numbers

DBT 07 SS - 7 gal. Drainback Tank - Diameter 16.125" Height:14"

DBT 10 SS - 10 gal. Drainback Tank - Diameter 16.125" Height:17"

DBT 15 SS - 15 gal. Drainback Tank - Diameter 16.125" Height 25"

DBT 20 SS - 20 gal. Drainback Tank - Diameter 16.125" Height 32"

DBT 30 SS - 30 gal. Drainback Tank - Diameter 16.125" Height 48" (1" to 1¼" fittings)

DBT 40 SS - 40 gal. Drainback Tank - Diameter 16.125" Height 63" (1" to 1¼" fittings)

Drainback System Kit



DBT 10 shown with DBT KIT
(Bradford White EcoStor Solar tank sold separately)

- Kit includes all major hardware for a DBT drain back tank:
 - TACO 009 bronze circulator pump
 - TACO Bronze pump flange set for 009 pump
 - Steca TR301 U solar controller with sensors
 - Steca and Goldline compatible Control and Pump bracket
 - 6" Welded aluminum tank stand with vinyl feet
 - Brass Boiler drain
 - 50 psi pressure relief valve
 - High quality patch cord with plug end for pump

Part Number
DBT KIT - Drainback system kit for DBT tanks
(additional fittings and piping required)



Complete systems available

**Call for pricing*



Tank stand

- High strength aluminum with vinyl feet
- All welded connections for structural rigidity
- Space saving design allows for easy plumbing under tank
- Accommodates all tank sizes

Height: 7.5"

Width: 13.5" x 13.5"

Weight: 3 lbs

Part Number:

DB ST6 - Welded aluminum drainback tank stand with rubber feet



Sight Glass

- Shows water level in drainback tank when system is operating or off
- Solid cast brass ends with compression o-rings
- High temperature poly tube

Part Numbers:

DB SG07 - sight glass for 7 gal. tank - 8" length

DB SG10 - sight glass for 10 gal. tank - 12" length

DB SG15 - sight glass for 15 gal. tank - 18" length

DB SG20 - sight glass for 20 gal. tank - 25.5" length

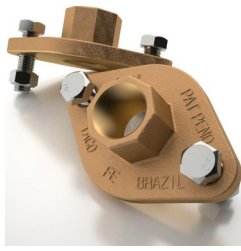


Solar System Controller

- High quality STECA TR 0301U solar controller
- Animated backlit graphic display with temperature reading
- Two temperature sensors included
- 120 V AC 50-60 Hz
- .5 Hp switch capacity

Part Number:

TR 0301U - Steca solar controller with sensors

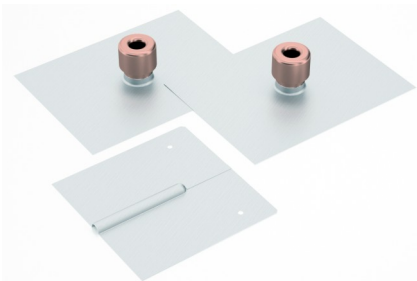


Pump Flange Set

- TACO 009 bronze flange set
- Necessary component for Taco 009 pump

Part Number:

TACO 110 BF - Taco 009 bronze pump flange set

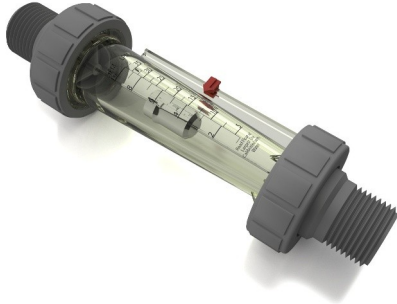


Solar Collector Flashing Kit

- 26 gauge galvanized roof flashing material
- Copper riser with copper coolie cap
- Unique wire flashing for PV panel wire or sensors

Part Number:

CFK1 - Solar Collector Flashing Kit



Flow Meter

- Rugged polysulfone construction
- 2 to 10 GPM capacity with set point
- 6" Inline design with 3/4" M threads

Part Number
Flow Meter 6



Temperature Gauges

- 2.5" Dial temperature gauge set
- Designed for solar loop piping
- 32°F to 250°F range
- Allows for easy diagnostics
- Includes 1/2" M thermo-well base

Part Number
TEMP G 250 SET



Water Heater Conversion Kit

- Converts any regular electric water heater to solar *
- Quick installation
- Replaces lower element or boiler drain
- Brass construction 3/4" F connections
- Includes strainer and element adapter

Part Number
WH CV KIT

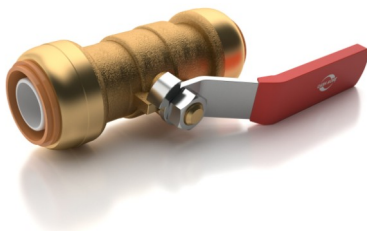
* Not for gas water heaters



In line Strainer

- Solar loop strainer for extended system reliability
- Solid brass construction with cleanable screen

Part Number
STRAINER 3/4F



Ball Valve

- Easily connect the solar loop piping with quick connect sharkbite ends
- Solid brass construction

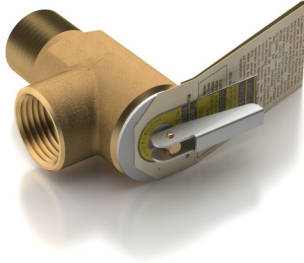
Part Numbers
BV34 SB - 3/4" ball valve with sharkbite ends



Float Vent Valve

- Automatic float vent valve allows for easy system setup and service
- Brass 1/8" M thread

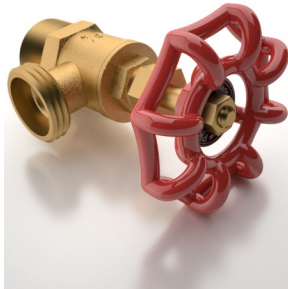
Part Number
FV18 - Taco float vent 1/8"



Pressure Relief Valve

- Relieves pressure buildup in solar loop
- Brass 3/4" M thread
- Protects system components for long life

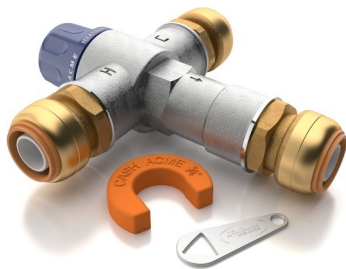
Part Number
PR50 - 3/4" 50psi pressure relief valve
PR30 - 3/4" 30psi pressure relief valve



Boiler Drain

- High quality drain allows for easy system drain and service
- Brass 3/4" M thread

Part Number
BD34 - 3/4" Boiler drain



Mixing Valve

- 3/4" Sharkbite fittings or F IPT thread
- Temperature Actuated Mixing Valve that mixes hot water with cold to deliver tempered water at a controlled temperature to 120° F maximum

Part Number
MV34 SB - 3/4"



Fittings

- Brass 3/4" TEE (part number - T34)
- Brass 3/4" Elbow (part number - EL34)
- Brass nipple 3/4" x 2.5" (part number - N34 2.5)
- Brass nipple 3/4" x close (part number - N34C)