



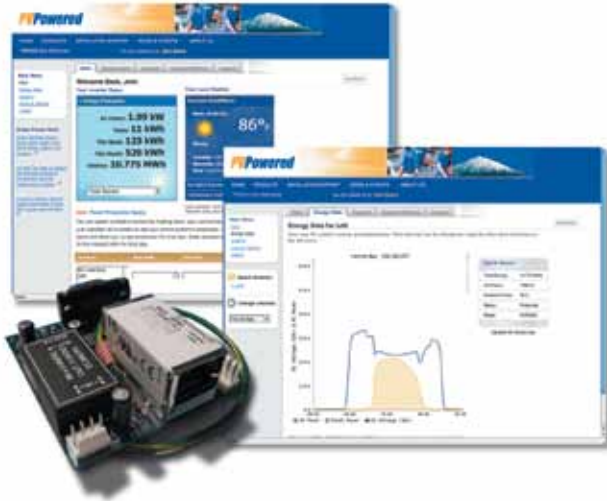
PVM1010

Performance Monitoring for PV Powered Inverters

Expand the value and reliability of your PV system with performance monitoring from PV Powered. Using the PVM1010 data module to connect your PV Powered inverters to a local area network provides access to performance data, historical trends, and status reporting from your PV system. This data can be viewed from your PC through the secure mypvpower.com web site, and accessed by performance monitoring reporting services (PMRS) providers for solar incentive reporting. Data can also be viewed through third party monitoring partners Fat Spaniel Technologies and DECK Monitoring*. Local access to PVM1010 data is enabled via Modbus TCP or UDP.

Through mypvpower.com, see the amount of power your PV system is generating, whether it is operating at peak efficiency, and much more. Easy-to-understand summary tables and detailed graphical charts show trends of voltage and power output over a variety of periods allowing you to plan maintenance and servicing. Sample graphs and a comprehensive list of Frequently Asked Questions (FAQs) help you identify ways to optimize system performance. An online service request to PV Powered's expert help desk brings quick assistance with complex issues.

*Additional fees may apply. Contact Fat Spaniel Technologies or DECK Monitoring for additional information.



FEATURES

- Easy field installation inside the inverter
- Detailed power data can be reported with better than +/-5% accuracy
- Energy output graphs include Hourly, Daily, Weekly, Monthly graphs of voltage vs. power output (updates sent from inverter to server every 15 minutes)
- Data available from each inverter or the total system
- Energy output data can be exported in standard spreadsheet format for further analysis
- Data is compatible with performance monitoring reporting services (PMRS) for performance-based incentive reporting
- Online help request provides fast access to service and support



20720 Brinson Boulevard
PO Box 7348
Bend, OR 97708

1-541-312-3832
WWW.PVPOWERED.COM

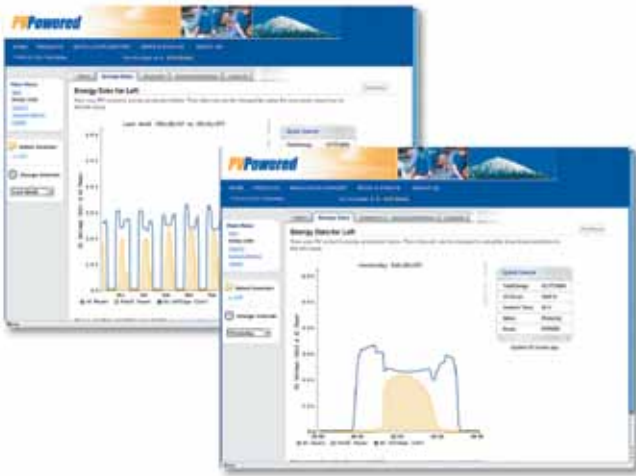


All PV Powered products are designed and manufactured in the U.S., are fully compliant with the Buy American Act, and qualify for projects funded by the federal stimulus package.



SYSTEM SUMMARY

View current weather conditions along with the most recent AC peak power reading in kWp and AC energy production for today and over the system lifetime in kWh.



ENERGY DATA

A high-resolution graphical view of power and voltage levels makes trend and transient details easily visible for a variety of time periods. Quick Glance status table shows Lifetime Energy Production, AC Power output, Temperature, Status and Inverter Information.



SERVICE REQUEST

Should performance questions arise that are not addressed by the comprehensive online FAQs, a service request can be quickly sent to PV Powered's expert help desk.

SYSTEM INFORMATION

Installation	Field installed by a qualified technician
Requires	High-speed, full-time Internet connection Standard RJ45 Terminated CAT5 cable connection each PVM1010 to the network/Internet connection
Account registration	Register at mypvpower.com from the installation site or with selected third party monitoring service provider
Inverter compatibility	PVP1100, PVP2000, PVP2500, PVP2800, PVP3000, PVP3500, PVP4600, PVP4800, PVP5200
Warranty	1 Year
Agency approvals	UL 1741, meets requirements for permanently connected devices
Environmental	Meets requirements of internal inverter conditions