



ZTX Series Automatic Transfer Switch Equipment

GE Zenith's ZTX Series switches are built for residential and light commercial applications requiring the dependability and ease of operation found in a power contactor switch.

- Ratings 40 to 400 amps (2, 3 and 4 pole)
- UL 1008, CSA and IEC listed to 480 VAC 50/60Hz
- Double throw, mechanically interlocked contactor mechanism
- Electrically operated, mechanically held
- Designed for standby applications

GE Zenith's ZTX switches are equipped with the R-M3 control panel (Module 3) as standard. This microprocessor control includes:

- Undervoltage sensing (90% pickup/80% dropout) of the utility source
- Voltage and frequency sensing of the generator source (90% voltage/95% frequency pickup)
- Time Delay Engine Start - 5 seconds (**P**)
- Time Delay Engine Warmup - Transfer to Generator - 20 seconds (**W**)
- Time Delay Utility Stabilization/Retransfer to Utility - 5 minutes (**T**)
- Time Delay Engine Cool Down - 5 minutes (**U**)

All time delays are fixed.

The unit is available in open type, NEMA 1 or NEMA 3R enclosures. The R-M4 control option (Module 4) adds a user interface and functionality, including:

- Indicating LEDs for power availability, switch position and load energized
- Pushbuttons for test, engine start (manual), generator exerciser and diagnostic reset

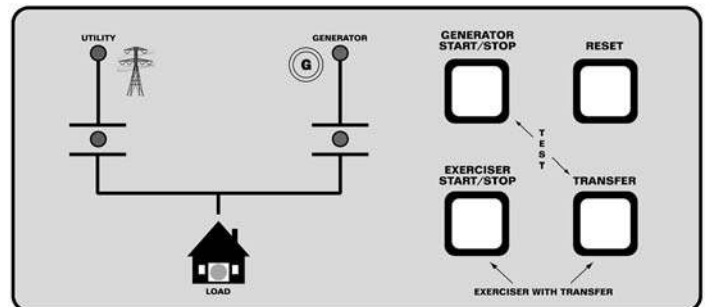


ZTX Series Light Commercial Switch with R-M3 Control Panel (covers removed)

- Selectable 7, 14, 21 or 28 day (factory set 28 days) generator exerciser timer
- Diagnostic LED indications

Additional options include:

- A3/A4** Auxiliary contacts (1 each) closed in utility and generator positions
 - Special timer settings



ZTX with R-M4 Microprocessor Control Panel

Ordering Information

Z T X

Block A
Base Model

Block B

Block B
Ampere Size

4 2 0
40 amps 200 amps

8 2 2
80 amps 225 amps

1 0 3 0
100 amps 300 amps

1 5 4 0
150 amps 400 amps

R * Control Panel

Block C
Control Panel

R M 3 *

Microprocessor Control Panel
Module 3 No Control Interface

R M 4 *

Microprocessor Control Panel
Module 4 with Interface

* G

Enter the "G" Option
if the Engine Crank
Limiter Option is desired

Block D

Block D
Switched Poles

B
2 Poles

E
3 Poles

F
4 Poles

Block F

Block F
Operational Voltage

2
120/240V 1Ø, 3 wire, 60Hz

2 1
120/208V 1Ø, 3 wire, 60Hz

3
240V 3Ø, 3 wire, 60Hz

3 1
208V 3Ø, 3 wire, 60Hz

3 2
220V 3Ø, 3 wire, 50Hz

3 8
120/240V 3Ø, 4 wire, 60Hz

4
120/208V 3Ø, 4 wire, 60Hz

4 1
127/220V 3Ø, 4 wire, 60Hz

5
480V 3Ø, 3 wire, 60Hz

5 1
440V 3Ø, 3 wire, 60Hz

5 2
440V 3Ø, 3 wire, 50Hz

5 3
440V 1Ø, 2 wire, 60Hz

7
277/480V 3Ø, 4 wire, 60Hz

9
240/416V 3Ø, 4 wire, 60Hz

9 1
220/380V 3Ø, 4 wire, 60Hz

9 2
220/380V 3Ø, 4 wire, 50Hz

9 3
240/416V 3Ø, 4 wire, 50Hz

Block E

Block E
Enclosure Type

C
NEMA 1 Enclosed

S
NEMA 3R

X
Open Style Unit

Block G

Block G
Accessories

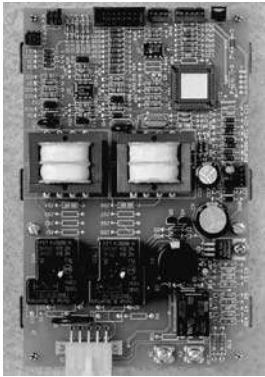
Then choose additional accessories

A3/A4

Auxiliary Contacts (1 each)
Closed in Normal
and Emergency

**For information on GE Zenith's
ZTX OEM plans, please
consult our sales department.**

Technical Specifications



R-M3 Control Panel
(Single phase
version shown)

Engine Cranking Limiter

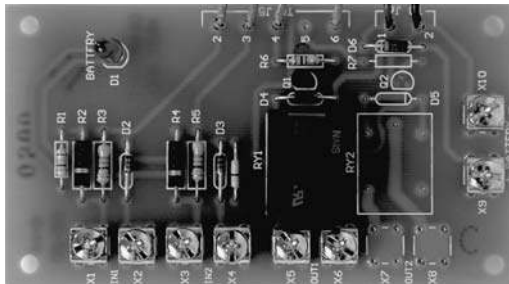
The ZTX Series is available with an engine cranking module. This accessory allows the engine to cycle crank 3 times with 2 rests (10 seconds each), then it disconnects the engine start function at the transfer switch if the engine fails to start.

Start signal disconnect also takes place on: overcrank, over-speed, high temperature, low oil pressure and if the generator circuit breaker is tripped or open.

Specify accessory module as required:

M3G — Module 3 with crank limiter

M4G — Module 4 with crank limiter (12 - 28 VDC range)



Generator Crank Limiter Option

Lug Configuration

Amp Size	Standard Lugs
40-150	1 - #8 to 3/0 AWG per pole
200-225	1 - #6 to 250 MCM per pole
300-400	1 - #4 to 600 MCM per pole

UL 1008 Withstand and Closing Ratings

Amp Size	Coordinated Molded Case Breakers	Current Limiting Fuse *
40-225	30,000	200,000
300-400	50,000	200,000

* consult factory for application information

Dimensions

Amp Size	NEMA 1	NEMA 3R
40-100	18 H x 18 W x 8 D	18 H x 18 W x 8 D
150-200	24 H x 18 W x 10 D	24 H x 18 W x 10 D
225	36 H x 24 W x 14 D	36 H x 24 W x 14 D
300-400	46 H x 24 W x 14 D	46 H x 24 W x 14 D